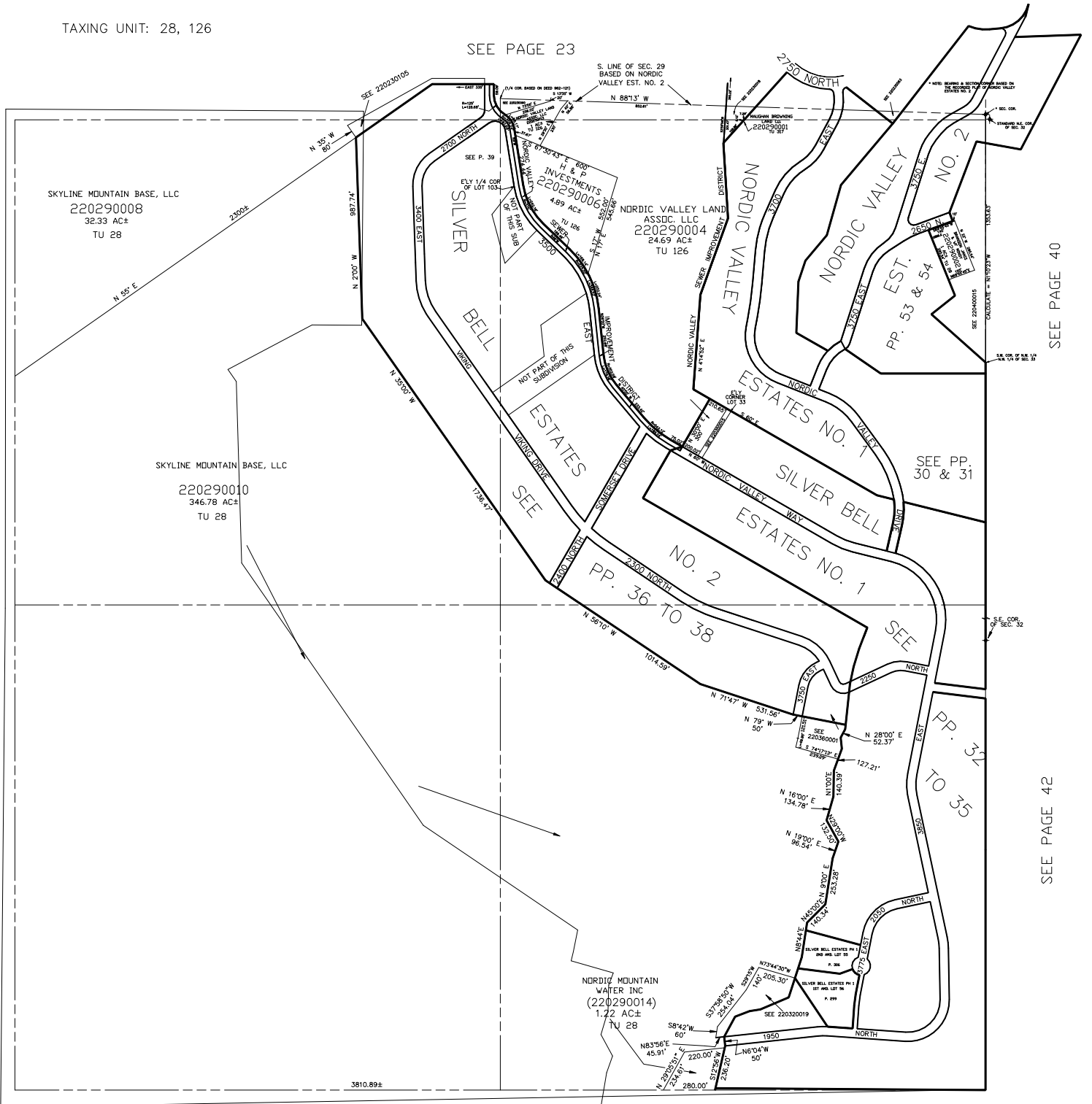


SECTION 32, T.7N., R.1E., S.L.B. & M.

IN WEBER COUNTY
SCALE 1" = 400'

TAXING UNIT: 28, 126

SEE PAGE 23



SEE PAGE 28

SEE PAGE 40

SEE PAGE 42

SEE BOOK 20, PAGE 4

*PROPERTY ADDRESS AFFIDAVIT E#2931879